

# Weatherproof Motorized Blackout Shutter

## WMBS-20



### DESCRIPTION

The new Phoebus **Weatherproof Motorized Blackout Shutter** is designed to provide full blackout for 1000 watt metal halide or xenon exterior luminaries or other similar fixtures.

The WMBS-20 shutter can be remotely controlled via either analog or DMX-512 control. The system operates on either 120, 220 or 277 volt AC input controlling the shutters via a 24 volt DC two wire control/power signal.

The WMBS-20 shutter can be combined with a color scroller and mounted to a variety of lighting fixtures.

The responsive smooth, chatterless 2 second movement of the shutter enables an operator to create and remotely control lighting effects for theatre, sports events, rock concerts and motion picture production.

Phoebus has the ability to build custom units to interface with a wide variety of fixture sizes, shapes and applications.

### FEATURES

- All weather operation
- Full blackout in less than 2 seconds
- Adaptable to many fixtures – round or rectangular
- Custom sizes available
- Analog or DMX controllable
- Daisy-chainable
- Low voltage activation and control
- Remote power supply and controller
- Simple two-wire operation
- Low maintenance
- Rugged design, long life
- Can coupled with a color changer
- Aluminum construction with powder coat paint finish

### APPLICATIONS

- Outdoor Sports Arenas
- Outdoor Theatre
- Architectural Lighting
- Motion Picture Production
- Security Applications

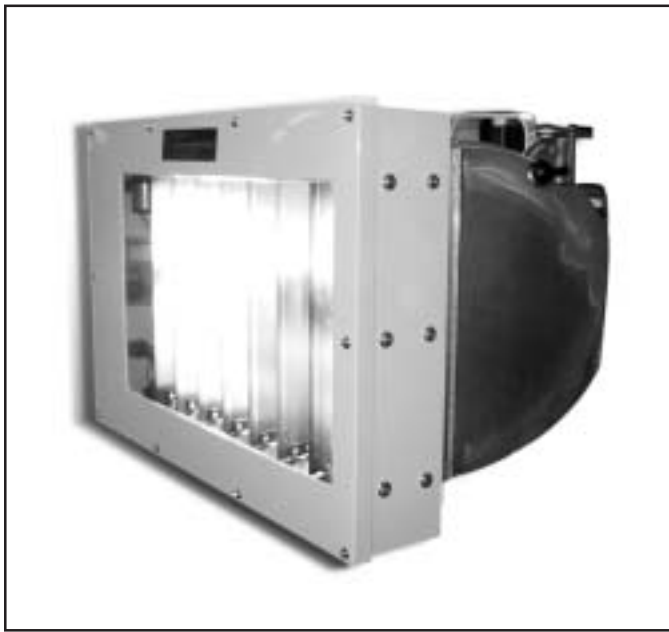
### OPTIONS

- Color changer mount
- Custom fixture mount
- Light Shield
- Barn Doors
- 220 volt operation



## PHOEBUS MANUFACTURING

A division of The Phoebus Company, Inc.  
2800 Third Street  
San Francisco, CA 94107  
Tel. 415 550 1177  
Fax. 415 550 2655  
[www.phoebus.com](http://www.phoebus.com)



**WMBS-20 Blackout Shutter on Sterner™ Infranor™ Polaris-12 1000 Watt Metal Halide Luminaire<sup>1</sup>**

## SPECIFICATIONS

<b>Model Number</b>	WMBS-20 Phoebus Weatherproof Motorized Blackout Shutter
<b>Fixture Version</b>	1000 Watt Metal Halide or Xenon Fixture
<b>Overall Size</b>	26.5" wide by 18" high by 4-3/8" deep
<b>Fixture Connection</b>	A ventilated mounting baffle attaches the WMBS-20 to the fixture. The baffle provides an air gap between the shutter and fixture providing ventilation and minimizing light leaks.
<b>Glass</b>	Front and rear facings of the shutter are heat-resistant tempered glass
<b>Weatherproofing</b>	The removable front glass face frame is sealed via heavy duty gaskets. The unit is completely sealed except for weep holes in the bottom of the unit to drain any moisture caused by condensation.
<b>Configuration</b>	8 vertical aluminum shutter blades with internally mounted motor and electrical components
<b>Light Shield Options</b>	Custom barn doors and light shields attach to shutter face frame
<b>Accessories</b>	Color changer mount available
<b>Connections</b>	Chassis mounted weatherproof two-wire connector for 24 volt DC control and power
<b>Construction</b>	Aluminum housing with aluminum and stainless steel components
<b>Default</b>	Unit can be set to default to either open or closed (dark) position
<b>Operating Voltage</b>	24 volt DC for Unit Activation
<b>Max. Fixture Wattage</b>	1000 watts
<b>Power Supply</b>	Remote power unit for control signal and activation
<b>Power supply Input Voltage</b>	120, 220 or 277 volts AC
<b>Finish</b>	Powder Coated Baked Finish - White, Black or Custom Color
<b>Certification</b>	ETL Approved

<sup>1</sup> Sterner™ and Infranor™ are trademarks of Sterner Lighting Systems Inc., a subsidiary of Hubbell Lighting, Inc. Specifications subject to change